

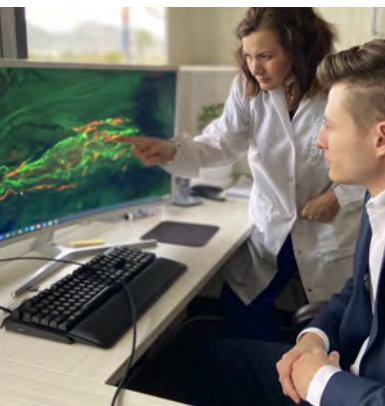
INTRODUCING THE SYN-ONE TEST™ FROM CND LIFE SCIENCES

A convenient and objective diagnostic tool to aid the diagnosis of synucleinopathies

Increased clarity and confidence in assessing a patient's symptoms to make a vital diagnosis is a key objective of every physician.

In the field of neurodegenerative diseases, it's often challenging to make definitive judgments based on clinical history alone. That's why the founders of CND Life Sciences embarked on a mission to prove that pathologic evidence of phosphorylated synuclein (p-syn) can be reliably detected in cutaneous nerve fibers.


Backed by well-honed laboratory techniques, the Syn-One Test is now available to arm neurologists with visual, accurate results to support a diagnosis and inform a treatment plan.



BY ANALYZING THREE (3) SMALL SKIN PUNCH BIOPSIES TAKEN IN YOUR OFFICE, CND DETECTS, VISUALIZES, AND QUANTIFIES THE PRESENCE OF P-SYN IN CUTANEOUS NERVE FIBERS TO SUPPORT A DIAGNOSIS OF:

- Parkinson's disease
- Dementia with Lewy bodies
- Multiple system atrophy
- Pure autonomic failure
- REM sleep behavior disorder


SYN-ONE TEST ADVANTAGES:


 High sensitivity and specificity for synucleinopathy

 Minimally invasive

 Provides visual proof of p-syn

 Uses anatomical pathology codes covered by Medicare

 Convenient and simple

 Supports shared decision-making with patients

To learn more and order the free Syn-One Test Biopsy Kit, visit cndlifesciences.com.

